

Much More Than Technology

Installation Catalogue

Next Generation Site Solutions for All Architectures

SITE SOLUTIONS





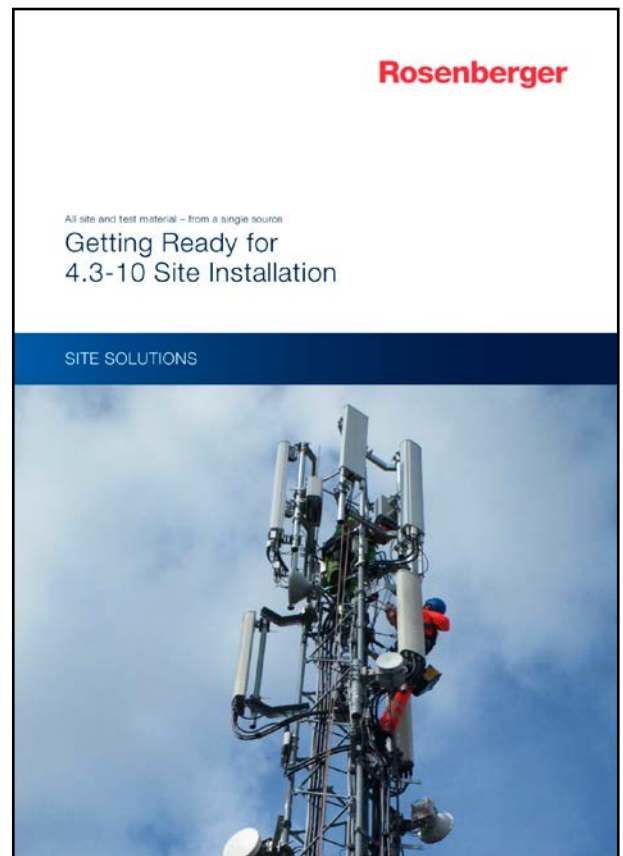
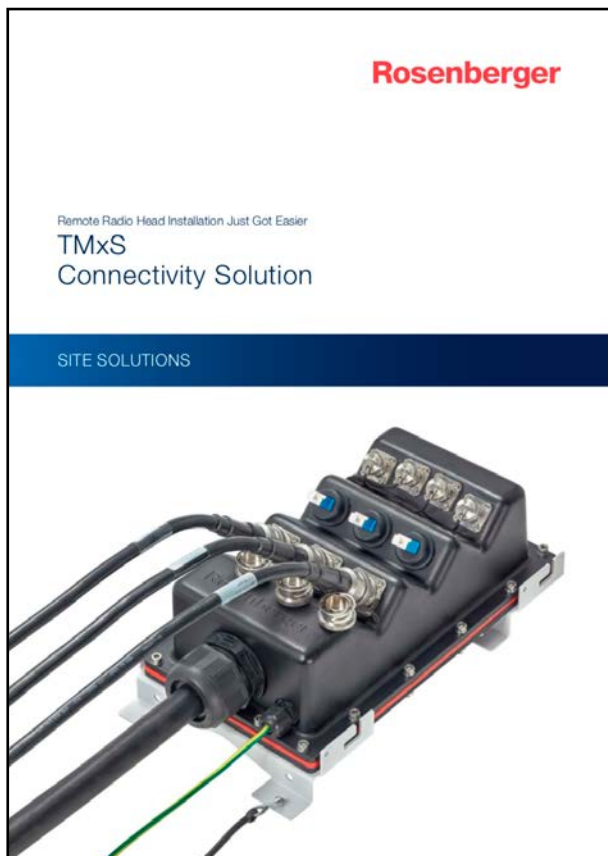
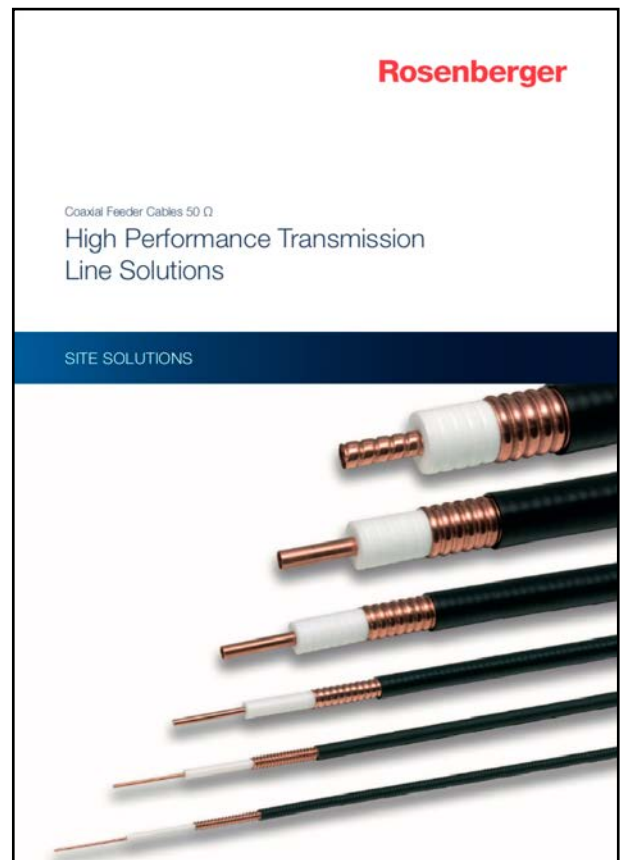
Rosenberger Site Solutions – Much More Than Technology

The Rosenberger Site Solutions Group designs, manufactures and provides solutions for the wireless infrastructure market. Our products and solutions offer innovative and leading-edge designs with focus on high performance and quality.



Rosenberger Site Solutions Catalogues	4
About Rosenberger Site Solutions	6
Fiber Optic, Power and Hybrid Distribution Boxes	8
AC Distribution Boxes	9
Indoor Fiber Optic Solutions	10
Attenuators	10
Excess Fiber Enclosures	10
Indoor Patch Cables	11
RET Cables	11
C-Profiles	12
Cable Clamps	12
Coax Clamps	12
FO/Power Clamps	13
Cold Shrink Tubes	14
Rosenberger Jumper Boots	15
Protection Caps	16
RFE – Rosenberger Fiber Enclosures	17
Flexible Cable Extension Kits	18
Power-Inline Connectors	19
Power Connector	19
Battery Cables	20
Grounding Kits	21
Grounding Materials	23
Hoisting Grips	24
Color Markers for Jumper Cables	25
Cable Ties	26
Cleaning Materials	27
PIM Test Kit	28
RF Adaptors	29
Index	31

Rosenberger Site Solutions Catalogues



Rosenberger

High Performance Coaxial Jumpers
**The Link for a better
Network Quality**

SITE SOLUTIONS



Rosenberger

Much More Than Technology
Passive DAS Solutions

SITE SOLUTIONS



Rosenberger

Distribution of the GPS Signal Over Long Distances
GPS over Fiber System

COMMUNICATION



Rosenberger

Much More Than Technology
Transmission Line Devices

SITE SOLUTIONS



About Rosenberger Site Solutions

Rosenberger Site Solutions GmbH is located in Laufen, Germany. We design, manufacture and provide solutions for the wireless infrastructure market.

Our products and systems offer innovative and leading-edge designs with focus on high performance and quality. Our solutions are highly flexible and friendly installable to fit any installation scenario either outdoor, on a tower or on a rooftop, or indoor in shopping centres, parking places or the like.

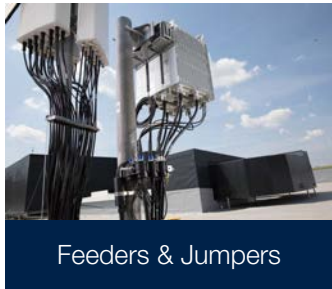
Our customers are OEMs, network operators, installers and system integrators.

From our distribution facility in Laufen, Germany or via our partners, we deliver our products and solutions to our customers according to their specific kitting, packing, delivery and logistics requirements.

Our focus is on efficient network implementation and reduced total costs of ownership.

Rosenberger Site Solutions – Much More Than Technology





LTE/5G

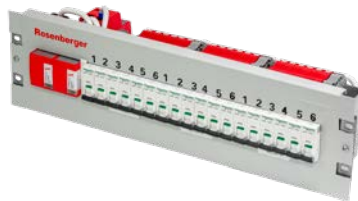
Technology Convergence	High Reliability
Large Bandwidth & High Capacity	Low Latency
	High Quality

Connection Everywhere Connected Cars E-Health Industry 4.0 Media & Infotainment



Fiber Optic, Power and Hybrid Distribution Boxes

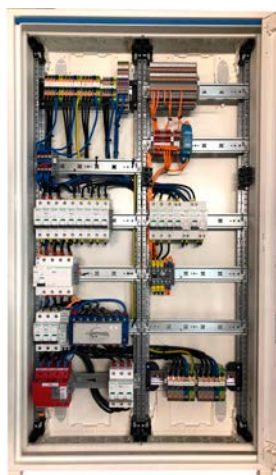
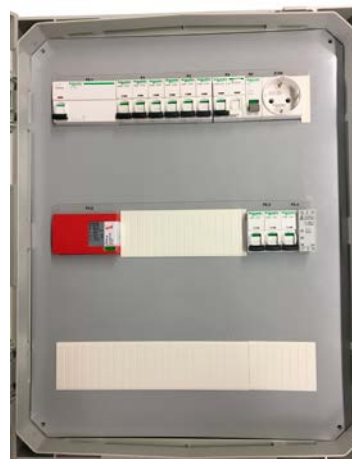
Rosenberger has a complete range of fiber optic, power and hybrid distribution boxes to support efficient plug & play installation scenarios.



Rosenberger No.	Description
SLPDU005-06	PreCONNECT® PDU - 6 x output, multipower cable, shielded output
SLPDU022-06	PreCONNECT® PDU - 6 x breaker B20A, SPD class I 25kA, 2 x 2-wire shielded main cable, shielded output
SLPDU023-01	PreCONNECT® PDU - SPD class I 25kA, 2 x 2-wire main cable, shielded output
SLPDU029-18-20	PreCONNECT® PDU - 19" 3 HU, 18 x breaker B20A, SPD class I 25kA spark gap
SLHDU060-03-25	PreCONNECT® HDU - 3 x LCD, 3 x breaker B25A, 1 x 2-wire main cable (2 x 35 mm ²)
SLHDU060-06-25	PreCONNECT® HDU - 6 x LCD, 6 x breaker B25A, 2 x 2-wire main cable (2 x 35 mm ²)
SLFDU004-06	PreCONNECT® FDU - 6 x LCD, IP66
SLFDU005-12	PreCONNECT® FDU - 12 x LCD, IP66

AC Distribution Boxes

Each site location needs an AC distribution box which is connected to the power-meter of the electricity supplier. The AC distribution boxes provide AC power to the rectifiers of the mobile operators. Surge protection devices protect the active equipment against over voltage. Indoor and outdoor solutions for different applications are available. Additional solutions for connection to an emergency generator are available, as well.



Rosenberger No.	Description
SLPDU069-00	PreCONNECT® PDU - AC subdistribution outdoor, 6 x B25A
SLPDU069-03	PreCONNECT® PDU - AC subdistribution outdoor, 6 x B32A
SLPDU069-01	PreCONNECT® PDU - AC subdistribution outdoor, with emergency power supply, 6x25A
SLPDU069-04	PreCONNECT® PDU - AC subdistribution outdoor, with emergency power supply, 6x32A
SLPDU081-00	PreCONNECT® PDU - AC subdistribution, indoor, 9 x B20A
SLPDU081-01	PreCONNECT® PDU - AC subdistribution, indoor, 9 x B25A
SLPDU081-02	PreCONNECT® PDU - AC subdistribution, indoor, 9 x B32A
SLPDU081-03	PreCONNECT® PDU - AC subdistribution, indoor, 9 x B40A
SLPDU084-00	PreCONNECT® PDU - AC subdistribution, outdoor to connect emergency supply

Indoor Fiber Optic Solutions

For reliable and well-organized indoor optical installations, Rosenberger offers high quality components in several different configurations to meet customer requirements.

Attenuators



Rosenberger No.	Description
98LCAK120-S15	Rosenberger FO attenuator LC/PC, 3 dB
98LCAK120-S17	Rosenberger FO attenuator LC/PC, 5 dB
98LCAK120-S21	Rosenberger FO attenuator LC/PC, 7 dB
98LCAK120-S19	Rosenberger FO attenuator LC/PC, 10 dB
98LCAK120-S20	Rosenberger FO attenuator LC/PC, 15 dB

Excess Fiber Enclosures



Rosenberger No.	Description
SLFCS009-000	Fiber cable enclosure 1 HU without drawer, zinc plated steel
SLFCS001-000	Fiber cable enclosure 1 HU without drawer, stainless steel
SLFCS011-000	Fiber cable enclosure 1 HU with drawer, zinc plated steel
SLFCS003-000	Fiber cable enclosure 1 HU with drawer, stainless steel
SLFCS010-000	Fiber excess cable storage for RRU, stainless steel

Indoor Patch Cables



Rosenberger No.	Description
L98B-A0157-1000	FO patch cable, 2FO, SM, LC compact – LC compact, 1 meter
L98B-A0157-2000	FO patch cable, 2FO, SM, LC compact – LC compact, 2 meters
L98B-A0157-3000	FO patch cable, 2FO, SM, LC compact – LC compact, 3 meters
L98B-A0157-10000	FO patch cable, 2FO, SM, LC compact – LC compact, 10 meters
L98C-117-1000	FO patch cable, 2FO, OM2, LC compact – LC compact, 1 meter
L98C-117-2000	FO patch cable, 2FO, OM2, LC compact – LC compact, 2 meters
L98C-117-3000	FO patch cable, 2FO, OM2, LC compact – LC compact, 3 meters
L98C-117-10000	FO patch cable, 2FO, OM2, LC compact – LC compact, 10 meters
L98B-A0295-1000	FO patch cable, 2FO, SM, LC duplex – LC duplex, 1 meter
L98B-A0295-2000	FO patch cable, 2FO, SM, LC duplex – LC duplex, 2 meters
L98B-A0295-3000	FO patch cable, 2FO, SM, LC duplex – LC duplex, 3 meters
L98B-A0295-10000	FO patch cable, 2FO, SM, LC duplex – LC duplex, 10 meters

RET Cables

To get an easy and reliable connection to the RET components in the network, Rosenberger supplies factory assembled and tested RET cables, compliant to the AISG 2.0 protocol. Short lengths for daisy chain applications and RET cables with DB9 connectors are available, as well.

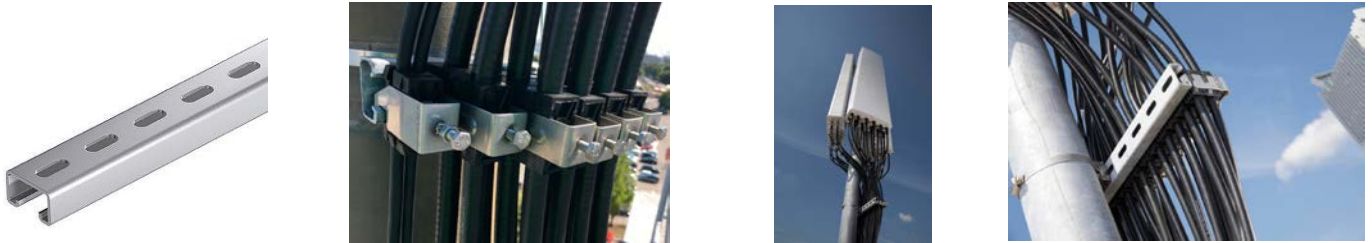


Rosenberger No.	Description
L99-C197-1000	RET control cable, AISG connectors, 1 meter
L99-C197-2000	RET control cable, AISG connectors, 2 meters
L99-C197-5000	RET control cable, AISG connectors, 5 meters
L99-C197-10000	RET control cable, AISG connectors, 10 meters
L99-C158-1000	RET control cable, AISG – DB9 connectors, 1 meter
L99-C158-2000	RET control cable, AISG – DB9 connectors, 2 meters
L99-C158-5000	RET control cable, AISG – DB9 connectors, 5 meters
L99-C158-10000	RET control cable, AISG – DB9 connectors, 10 meters

* other lengths available on request

C-Profiles

Rosenberger supplies high quality C-Profiles, which provide a safe attachment of cable clamps in the mobile network.



Rosenberger No.	Description
KHA8-01F	40 x 22 mm C-profile, 100 mm, galvanized
KHA8-02F	40 x 22 mm C-profile, 200 mm, galvanized
KHA8-03F	40 x 22 mm C-profile, 300 mm, galvanized
KHA8-04F	40 x 22 mm C-profile, 400 mm, galvanized
KHA8-05F	40 x 22 mm C-profile, 500 mm, galvanized
KHA8-06F	40 x 22 mm C-profile, 600 mm, galvanized
KHA7-01E	40 x 22 mm C-profile, 100 mm, stainless steel
KHA7-02E	40 x 22 mm C-profile, 200 mm, stainless steel
KHA7-03E	40 x 22 mm C-profile, 300 mm, stainless steel
KHA7-04E	40 x 22 mm C-profile, 400 mm, stainless steel
KHA7-05E	40 x 22 mm C-profile, 500 mm, stainless steel
KHA7-06E	40 x 22 mm C-profile, 600 mm, stainless steel

Cable Clamps

The Rosenberger cable clamps provide a safe and correct fixation of coaxial, power and fiber optic cables on towers. Made of Polyamide with glass fiber, clamps are available in several configurations, according to the type and number of cables and type of fixation, like C-bars or flat bars.



Coax Clamps

Rosenberger No.	Description
SLCC1X1-C0X	C-clamp 26 mm, single, 1x, 2x or 3x corrugated cables
SLCC2X1-C0X	C-clamp 26 mm, double, 2x, 4x or 6x corrugated cables
SLCC1X2-C0X	Hook-type 40 x 22 mm, single, 1x, 2x or 3x corrugated cables

FO/Power Clamps

Rosenberger No.	Description
SLCC2X1-PF14	C-Clamp 26 mm, double, 2x, 4x or 6x FO cables, 4.5 - 7 mm
SLCC221-ZF1	C-Clamp 26 mm, double, 1-4x FO 4.5 - 7 mm + 1-4x power 9 - 13 mm
SLCC221-PF20	C-Clamp 26 mm, double, 2x, 4x or 6x power cables 9 - 13 mm
SLCC1X2-0814	Hook-type 40 x 22 mm, single, 1-2x, FO cables, 8 - 14 mm
SLCC1X2-0408	Hook-type 40 x 22 mm, double, 4-8x, FO cables, 4 - 8 mm
SLCC1X2-1226	Hook-type 40 x 22 mm, single, 1-4x, power cables, 12 - 26 mm
SLCC1X2-2232	Hook-type 40 x 22 mm, single, 1-3x, power cables, 22 - 32 mm
SLCC1X2-3040	Hook-type 40 x 22 mm, single, 1-2x, power cables, 30 - 40 mm
SLCC132-1x0814+2x0408	Hook-type 40 x 22 mm, hybrid, 1x power 8 - 14 mm + 2x FO, 4 - 8 mm
SLCC182-2x1226+6x0507	Hook-type 40 x 22 mm, hybrid, 2x power 12 - 26 mm + 6x FO, 5 - 7 mm
SLCC172- 3x1226+4x0507	Hook-type 40 x 22 mm, hybrid, 3x power 12 - 26 mm + 4x FO, 5 - 7 mm
SLCC2X3-PF22	Hose clamp, for Ø 90 - Ø 110 mm masts, 2x, 4x or 6x FO cables, 7 - 8 mm



Cold Shrink Tubes

To get the best weatherproof protection on site, Rosenberger provides cold shrink tubes, easy to install in the field, to protect power, antenna or feeders connections.



Rosenberger No.	Description
RLCST-25/06-200-BK	Rosenberger cold shrink tube for cable diameter, 6 - 25 mm
RLCST-40/08-200-BK	Rosenberger cold shrink tube for cable diameter, 10 - 40 mm (3/8" up to 7/8", 200 mm length)



Rosenberger Jumper Boots

To get best and easy weatherproof jumper connections on site, Rosenberger provides jumper boots for 4.3-10 connectors, a tool-free solution reducing installation time on site. The Rosenberger jumper boot is re-usable and field mountable.



Rosenberger No.	Description
SLWK111-C03	Rosenberger jumper boot 4.3-10, 1/2" jumpers

Installation Video:



Protection Caps

To protect open ends against dust and water, Rosenberger supplies IP67 protection caps for coaxial connectors and RET cables.



Rosenberger No.	Description
65Z001-001N	Protection cap for 4.3-10 female, brass, with cord
65Z001-000N	Protection cap for 4.3-10 female, brass
65Z002-001	Protection cap for 4.3-10 female, plastic
64Z003-000N	Protection cap for 4.3-10 male, brass, with cord
64Z005-000N	Protection cap for 4.3-10 male, brass
64Z004-000	Protection cap for 4.3-10 male, plastic
60Z124-000N	Protection cap for 7-16 female, brass, with cord
60Z118-000N	Protection cap for 7-16 female, brass
60Z118-001	Protection cap for 7-16 female, plastic
60Z121-000	Protection cap for 7-16 male, plastic
SLZ0004-000	Protection cap for RET male, plastic
SLZ0004-001	Protection cap for RET female, plastic

RFE – Rosenberger Fiber Enclosures

The Rosenberger RFE 2.0 is a watertight and UV resistant enclosure for various fiber optic connectors. To avoid any damage to the fiber, the RFE 2.0 has a self-blocking bayonet coupling mechanism which cannot be opened as long as the cable gland has not been loosened.



Rosenberger No.	Description
98Z111-S01	RFE 2.0, 4.5 - 5.5 mm
98Z111-S03	RFE 2.0, 6.5 - 7.5 mm
98Z111-S04	RFE 2.0, 7.5 - 9.5 mm
98Z405-K00	RFE 4-hole flange

The RFE extension tube provides protection to FO-cables with fanout longer than 80 mm.

Flexible Cable Extension Kits

The Rosenberger flexible cable extension kit is designed for connecting two outdoor fiber optic cable assemblies in field. The extension tube can support cables at 4.5 to 9.0 mm diameter with IP67 protective strain relief parts at both ends. The kit contains different types of fiber optic adapters such as LC duplex or MPO.



Rosenberger No.	Description
98K100-130-XXX	Flexible cable extension kit
98K100-130-L01	Flexible cable extension kit, LC duplex adapter, 5.0 mm seal
98K100-130-L02	Flexible cable extension kit, LC duplex adapter, 7.0 mm seal
98K100-130-L03	Flexible cable extension kit, LC duplex adapter, 8.0 mm seal
98K100-130-L04	Flexible cable extension kit, MPO adapter, 7.0 mm seal

Power-Inline Connectors

The Rosenberger power inline connector offers an easy way to extend power cables already installed, thus facilitating quick swaps. Cable sizes up to 10 mm² and outer diameter from 7 to 17 mm.



Rosenberger No.	Description
99C084-000N1	Rosenberger power Inline connector, 1 - 10 mm ² shielded two wire or coaxial power cable
99C084-002A1	Rosenberger power Inline connector, 1 - 10 mm ² / 10 - 35 mm ² shielded two wire or coaxial power cable

Power Connector

Product Portfolio

- Field installable connectors for DC-C systems
- Field installable connectors for DC-I systems



Rosenberger No.	Description
7F2RS105B-0M16T1	Power connector, 3 wire up to 16 mm ² for Ericsson/Nokia/O-RAN radios (3-way), 55A/60VDC

Battery Cables

Halogen free, flame retardant power cable – double insulated – for connection of batteries or power distribution units. Suitable for indoor applications only. Maximum current handling acc. to DIN VDE 0298-4 (equal to type H07Z-K).



Rosenberger No.	Description
SLZ0035-10-RD	Power cable 1 x 10 mm ² , double insulated, CPR Kl. dca, red, 9,0 mm
SLZ0035-16-RD	Power cable 1 x 16 mm ² , double insulated, CPR Kl. dca, red, 10,0 mm
SLZ0035-25-RD	Power cable 1 x 25 mm ² , double insulated, CPR Kl. dca, red, 10,5 mm
SLZ0035-35-RD	Power cable 1 x 35 mm ² , double insulated, CPR Kl. dca, red, 11,0 mm
SLZ0035-50-RD	Power cable 1 x 50 mm ² , double insulated, CPR Kl. dca, red, 13,0 mm
SLZ0035-10-WH	Power cable 1 x 10 mm ² , double insulated, CPR Kl. dca, white, 9,0 mm
SLZ0035-16-WH	Power cable 1 x 16 mm ² , double insulated, CPR Kl. dca, white, 10,0 mm
SLZ0035-25-WH	Power cable 1 x 25 mm ² , double insulated, CPR Kl. dca, white, 10,5 mm
SLZ0035-35-WH	Power cable 1 x 35 mm ² , double insulated, CPR Kl. dca, white, 11,0 mm
SLZ0035-50-WH	Power cable 1 x 50 mm ² , double insulated, CPR Kl. dca, white, 13,0 mm

Grounding Kits

Rosenberger provides grounding kits, in different diameters, suitable for all types of coax and power cables.



Rosenberger No.	Description
SLGK004-C01-060	Grounding kit for 1/4" R, 3/8 S, RTK 400 flexible cable, IP67
SLGK004-C09-060	Grounding kit for 1/4" S superflexible cable, IP67
SLGK004-C02-060	Grounding kit for 3/8" S superflexible cable, IP67
SLGK004-C03-060	Grounding kit for 1/2" R flexible cable, IP67
SLGK004-C05-060	Grounding kit for 7/8" R flexible cable, IP67
SLGK004-C06-060	Grounding kit for 1 1/4" R flexible cable, IP67
SLGK004-C07-060	Grounding kit for 1 5/8" R flexible cable, IP67
SLGK017-0N9-060	Grounding kit for RTK 400, 1/2" superflexible cable
SLGK017-0N9-060	Grounding kit for RTK 400, RTK 300, power cables 5 - 20 mm, IP67
SLGK015-C05-060	Grounding kit for power cables 12 - 30 mm



Grounding Materials

To protect the system on mobile communication installations, Rosenberger provides grounding materials for different site applications.



Rosenberger No.	Description
SLZ0029-168	Grounding clamp, max. pole diameter 168 mm, up to 3 contact blocks can be mounted
SL540250	Uni-grounding clamp M8 Rd8-10 + 4 - 50 mm ²
MKD21	Mounting clamp 21 mm opening, hot-dip galvanized
MKD21E	Mounting clamp 21 mm opening, stainless steel
MKD40	Mounting clamp 40 mm opening, hot-dip galvanized
SLCCXX1-00-H	Mounting clamp 26 mm opening, stainless steel
SLCCXX1-00	Mounting clamp up to 26 mm, M8, stainless steel (MKD 21)
MKD21	Mounting clamp 21 mm opening, hot-dip galvanized
SL371009	Access clamp TG/tZn FI 0,4-12 for Rd 7 - 10 mm ²



Hoisting Grips

To securely hook coax and power cables to the top of the tower, Rosenberger supplies pre-laced hoisting grips. Available for a wide range of cable sizes, made up of mesh grip with single eye support, it allows for quick and efficient installation.



Rosenberger No.	Description
SLHG001-C03	Hoisting grip, pre-laced, 1/2" R flexible cable
SLHG001-C05	Hoisting grip, pre-laced, 7/8" R flexible cable
SLHG001-C06	Hoisting grip, pre-laced, 1 1/4" R flexible cable
SLHG001-C07	Hoisting grip, pre-laced, 1 5/8" R flexible cable

Color Markers for Jumper Cables

To make identification and marking of jumper cables during installation easier, Rosenberger offers cable marker clips in different colours. These clips can easily be put on the jumper cables ½" flex and ½" superflex by hand, and additional marking is possible with permanent markers.



Rosenberger No.	Description
SLZ0013-C03-YYY	Rosenberger colour cable marker for ½" flex jumper
SLZ0013-C08-YYY	Rosenberger colour cable marker for ½" superflex jumper

* -YYY refers to the colours: -RED (red), -YEL (yellow), -BLU (blue), -GRN (green), -VLT (violet), -BRN (brown), -ORN (orange), -WTE (white) and -GRY (grey).

Cable Ties

To make proper and reliable fixation of cables or bundling cables, Rosenberger offers nylon cable ties in different sizes, to fulfil customer's requirement. The cables ties for outdoor use are UL 94 V2 approved.



Rosenberger No.	Description
SLZ0007-000	Rosenberger cable tie 140 x 3.5 mm, black
SLZ0007-001	Rosenberger cable tie 100 x 2.5 mm, black
SLZ0007-002	Rosenberger cable tie 200 x 2.5 mm, black
SLZ0007-003	Rosenberger cable tie 200 x 3.5 mm, black
SLZ0007-004	Rosenberger cable tie 280 x 4.5 mm, black
SLZ0007-005	Rosenberger cable tie 360 x 4.5 mm, black

Cleaning Materials

Rosenberger provides cleaning materials to achieve the best PIM performance on field coaxial connector assemblies.



Rosenberger No.	Description
SLZ0009-000	PIM cleaning kit, with alcohol, brush and cotton sticks
SLZ0009-001	Clean compressed air bottle
SLT004-000	Inner conductor dielectric bond remover

For proper on site fiber optic cleaning, Rosenberger supplies the correct cleaning tools dedicated to each type of connector.



Rosenberger No.	Description
98W005-000	ClickCleaner for Ø 1.25 mm ferrule connector
98W006-000	ClickCleaner for Ø 2.5 mm ferrule connector
98W007-000	ClickCleaner for Rosenberger duplex- and quad connectors (RDC/RQC)
98W012-000	ClickCleaner for MTP/MPO connectors
98W013-000	ReelCleaner for all types of connectors (except MTP/MPO male)

PIM Test Kit

To achieve the optimal PIM tests on site, Rosenberger supplies a PIM test kit, comprising low PIM components such as test cable, test load, torque wrenches for 7-16 and 4.3-10 connectors, adjustable spanner and RF adaptors.



Rosenberger No.	Description
SLTK003-002	PIM test accessories kit

RF Adaptors

To get the most reliable and effective interconnection between different genders and interfaces, Rosenberger provides several RF adapters that can be installed on site and used for testing with several possible combinations (7-16, N, 4.3-10 and NEX10).



Straight Adaptors

	7-16 male	7-16 female	N male	N female	4.3-10 male	4.3-10 female	NEX10 female	NEX10 male
7-16 male	60S101-SIMN1	60S101-KIMN1	53S160-SIMN1	60S153-KIMN1	60S164-S00N1	60S164-K00N1	60S189-K00N1	60S189-S00N1
7-16 female		60K101-KIMN1	53S160-KIMN1	53K160-KIMN1	60K164-S00N1	60K164-K00N1	60K189-K00N1	60K189-S00N1
N male			53S101-S00N5	53S101-K00N5	53S164-S00N1	53S164-K00N1	53S189-K00N1	53S189-S00N1
N female				53K102-K00N5	53K164-S00N1	53K164-K00B1	53K189-K00N1	53K189-S00N1
4.3-10 male					64S101-S00N1	64S101-K00B1	64S189-K01N1	64S189-S00N1
4.3-10 female						64K101-K00B1	64K189-K00N1	64K189-S00N1
NEX10 male								89S101-S00N1
NEX10 female							89K101-K00N1	

Right Angle Adaptors

Rosenberger No.	Description
53K260-S00N1	RF adapter 7-16 male – N female, right angle
64S201-K00B1	RF adapter 4.3-10 male – 4.3-10 female, right angle

Bulkhead Adaptors

Rosenberger No.	Description
64K501-K00B1	RF adapter 4.3-10 female – 4.3-10 female, bulkhead
53K502-K00N5	RF adapter N female – N female, bulkhead



Rosenberger No.

53K102-K00N5	29	98W012-000	27	SLCCXX1-00-H	23
53K160-KIMN1	29	98W013-000	27	SLFCS001-000	10
53K164-K00B1	29	98Z111-S01	17	SLFCS003-000	10
53K164-S00N1	29	98Z111-S03	17	SLFCS009-000	10
53K189-K00N1	29	98Z111-S04	17	SLFCS010-000	10
53K189-S00N1	29	98Z405-K00	17	SLFCS011-000	10
53K260-S00N1	29	99C084-000N1	19	SLFDU004-06	8
53K502-K00N5	29	99C084-002A1	19	SLFDU005-12	8
53S101-K00N5	29	KHA7-01E	12	SLGK004-C01-060	21
53S101-S00N5	29	KHA7-02E	12	SLGK004-C02-060	21
53S160-KIMN1	29	KHA7-03E	12	SLGK004-C03-060	21
53S160-SIMN1	29	KHA7-04E	12	SLGK004-C05-060	21
53S164-K00N1	29	KHA7-05E	12	SLGK004-C06-060	21
53S164-S00N1	29	KHA7-06E	12	SLGK004-C07-060	21
53S189-K00N1	29	KHA8-01F	12	SLGK004-C09-060	21
53S189-S00N1	29	KHA8-02F	12	SLGK015-C05-060	21
60K101-KIMN1	29	KHA8-03F	12	SLGK017-0N9-060	21
60K164-K00N1	29	KHA8-04F	12	SLHDU060-03-25	8
60K164-S00N1	29	KHA8-05F	12	SLHDU060-06-25	8
60K189-K00N1	29	KHA8-06F	12	SLHG001-C03	24
60K189-S00N1	29	L98B-A0157-1000	11	SLHG001-C05	24
60S101-KIMN1	29	L98B-A0157-10000	11	SLHG001-C06	24
60S101-SIMN1	29	L98B-A0157-2000	11	SLHG001-C07	24
60S153-KIMN1	29	L98B-A0157-3000	11	SLPDU005-06	8
60S164-K00N1	29	L98B-A0295-1000	11	SLPDU022-06	8
60S164-S00N1	29	L98B-A0295-10000	11	SLPDU023-01	8
60S189-K00N1	29	L98B-A0295-2000	11	SLPDU029-18-20	8
60S189-S00N1	29	L98B-A0295-3000	11	SLPDU069-00	9
60Z118-000N	16	L98C-117-1000	11	SLPDU069-01	9
60Z118-001	16	L98C-117-10000	11	SLPDU069-03	9
60Z121-000	16	L98C-117-2000	11	SLPDU069-04	9
60Z124-000N	16	L98C-117-3000	11	SLPDU081-00	9
64K101-K00B1	29	L99-C158-1000	11	SLPDU081-01	9
64K189-K00N1	29	L99-C158-10000	11	SLPDU081-02	9
64K189-S00N1	29	L99-C158-2000	11	SLPDU081-03	9
64K501-K00B1	29	L99-C158-5000	11	SLPDU084-00	9
64S101-K00B1	29	L99-C197-1000	11	SLT004-000	27
64S101-S00N1	29	L99-C197-10000	11	SLTK003-002	28
64S189-K01N1	29	L99-C197-2000	11	SLWK111-C03	15
64S189-S00N1	29	L99-C197-5000	11	SLZ0004-000	16
64S201-K00B1	29	MKD21	23	SLZ0004-001	16
64Z003-000N	16	MKD21E	23	SLZ0007-000	26
64Z004-000	16	MKD40	23	SLZ0007-001	26
64Z005-000N	16	RLCST-25/06-200-BK	14	SLZ0007-002	26
65Z001-000N	16	RLCST-40/08-200-BK	14	SLZ0007-003	26
65Z001-001N	16	SL371009	23	SLZ0007-004	26
65Z002-001	16	SL540250	23	SLZ0007-005	26
7F2RS105B-0M16T1	19	SLCC132-1x0814+2x0408	13	SLZ0009-000	27
89K101-K00N1	29	SLCC172-3x1226+4x0507	13	SLZ0009-001	27
89S101-S00N1	29	SLCC182-2x1226+6x0507	13	SLZ0013-C03-YYY	25
98K100-130-L01	18	SLCC1X1-C0X	12	SLZ0013-C08-YYY	25
98K100-130-L02	18	SLCC1X2-0408	13	SLZ0029-168	23
98K100-130-L03	18	SLCC1X2-0814	13	SLZ0035-10-RD	20
98K100-130-L04	18	SLCC1X2-1226	13	SLZ0035-10-WH	20
98K100-130-XXX	18	SLCC1X2-2232	13	SLZ0035-16-RD	20
98LCAK120-S15	10	SLCC1X2-3040	13	SLZ0035-16-WH	20
98LCAK120-S17	10	SLCC1X2-C0X	12	SLZ0035-25-RD	20
98LCAK120-S19	10	SLCC221-PF20	13	SLZ0035-25-WH	20
98LCAK120-S20	10	SLCC221-ZF1	13	SLZ0035-35-RD	20
98LCAK120-S21	10	SLCC2X1-C0X	12	SLZ0035-35-WH	20
98W005-000	27	SLCC2X1-PF14	13	SLZ0035-50-RD	20
98W006-000	27	SLCC2X3-PF22	13	SLZ0035-50-WH	20
98W007-000	27	SLCCXX1-00	23		



Website

For more information refer to our website:
www.rosenberger.com/iso

Rosenberger

Rosenberger Site Solutions GmbH
Mayerhofen 45A
83410 Laufen
Germany
Phone +49 8684 18-5000
siso@rosenberger.com
www.rosenberger.com/iso

Certified by IATF 16949 · DIN EN 9100 · ISO 9001 · ISO 14001

Rosenberger No.
pA 10114906 · Info505InstallationCatEN
250/2022

Rosenberger® is a registered trademark of Rosenberger Hochfrequenztechnik GmbH & Co. KG.
All rights reserved.

© Rosenberger 2022