



Technological innovation for Industrial Wireless infrastructures



Use Cases

Use Case 1 : Aerospace — Albacete (ESP)



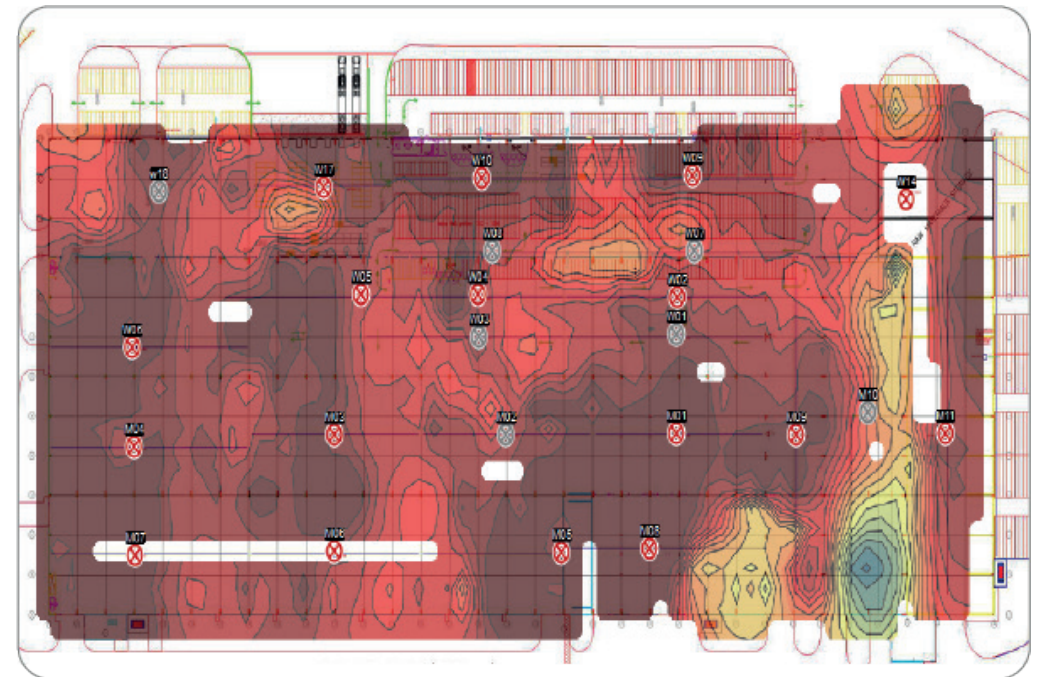
- Shelved and drive-in warehouse
- 40.000 m² (430,000 ft²) of indoor extension
- Dual band 2.4Ghz and 5GHz WiFi coverage
- Shelves height up to 9m (30ft)
- Corridors width between shelves from 1.2m (4ft) to 3m (10ft)
- Strong reduction of cabling and fiber
- Full MIMO 2x2 with dual antennas
- Access point and amplifiers full redundant with failover
- Ground signal received, better than -60dBm +/-5dB (high flatness)



Use Case 2 : Ceramics Warehouse — Tennessee (USA)

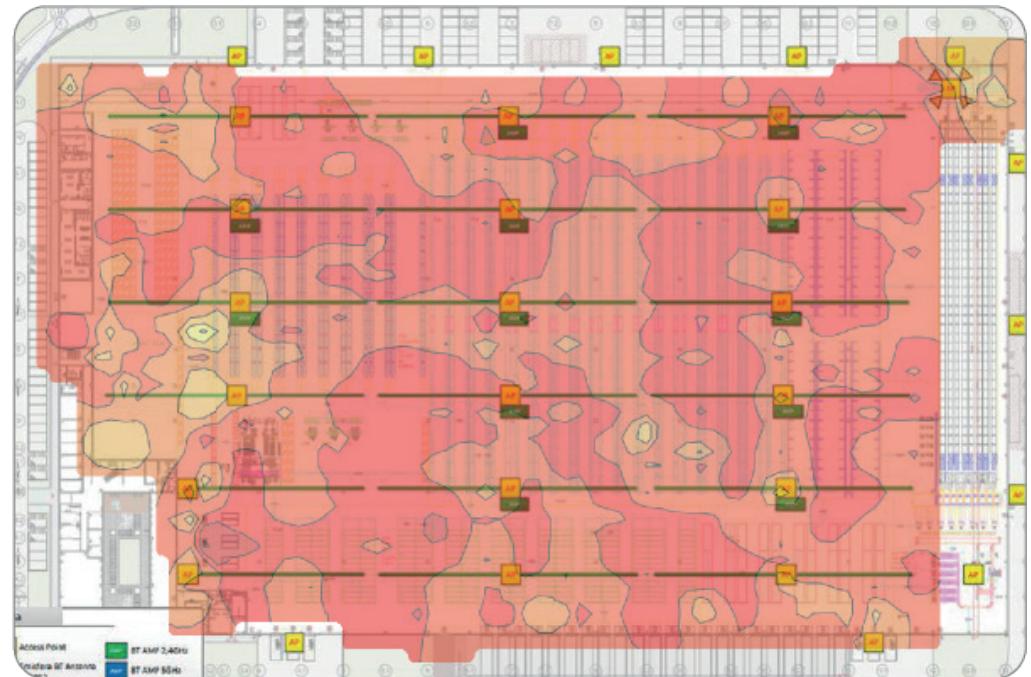
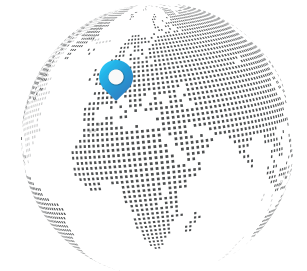


- Dynamic ground storage
- 20.000 m² (215,000 ft²) of shelved warehouse
- Shelves with material stored up to 9 meters (30 ft) above the ground
- Aisles between shelves 1.5 to 3 meters wide (5 to 10ft)
- Difficulty in wiring within an industrial environment
- Presence of interfering anti-intrusion system
- Access Point at eye level for easy maintenance



Use Case 3 : GDO distribution center - BERGAMO (IT) dect WiFi™

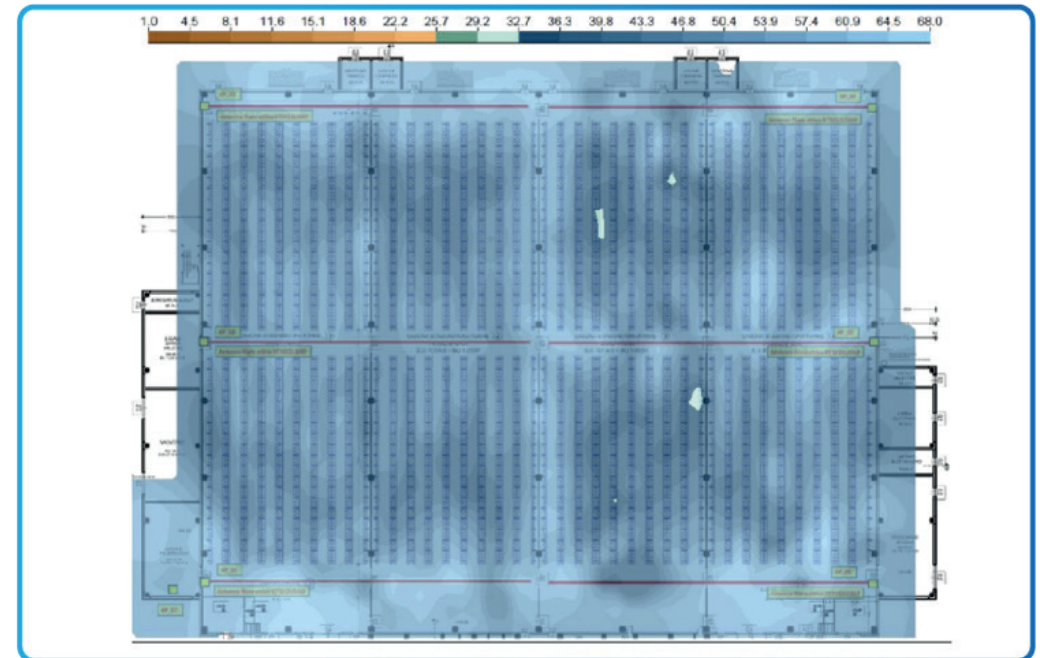
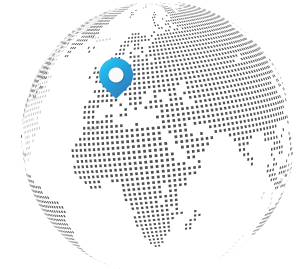
- The greater logistic center in Italy in the discount store channel
- 60 million items moved per year
- Distribution of general goods and fresh products
- Wi-Fi network working on barcode terminals and pallet moving robots (AGV and LGV)
- Over 180.000 m² (1,940,000 ft²) of shelved area covered with less than 120 Access Point thanks to Kymata technology



Use Case 4 : Cold storage facilities - PADOVA (IT)



- Operating temperatures at -40°C
- Holes in case of antenna switching from one cell to another
- Coverage Map Cell (SNR) with noise threshold at -100dB at 2.4GHz



Use Case 5 : Automatic Warehouses - TOULOUSE (FR)



- The ANT5AW model is specifically designed for self-storage coverage on Wi-Fi frequencies from 2.3GHz to 6.2GHz, also MIMO (option)
- Triplex or n-plex antennas for coverage of storage holds inside automated warehouses

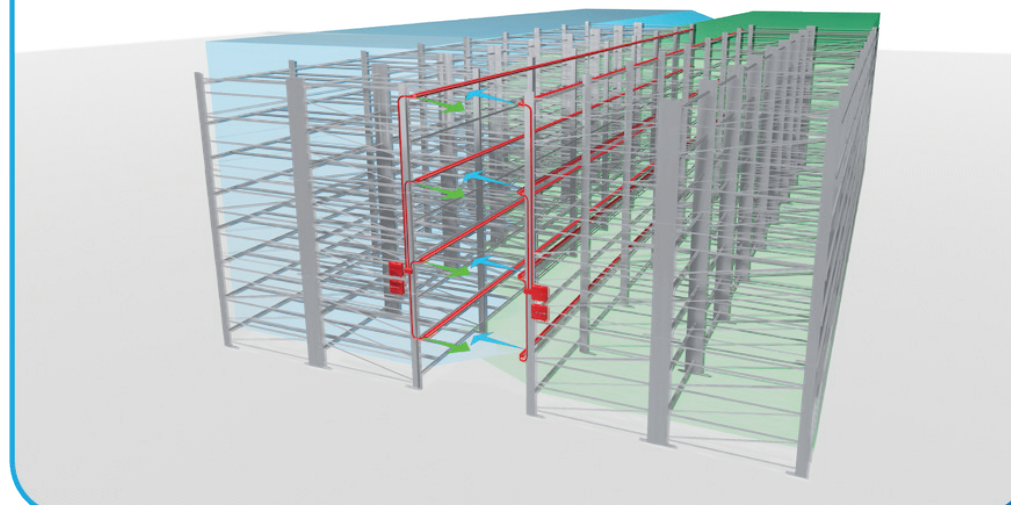


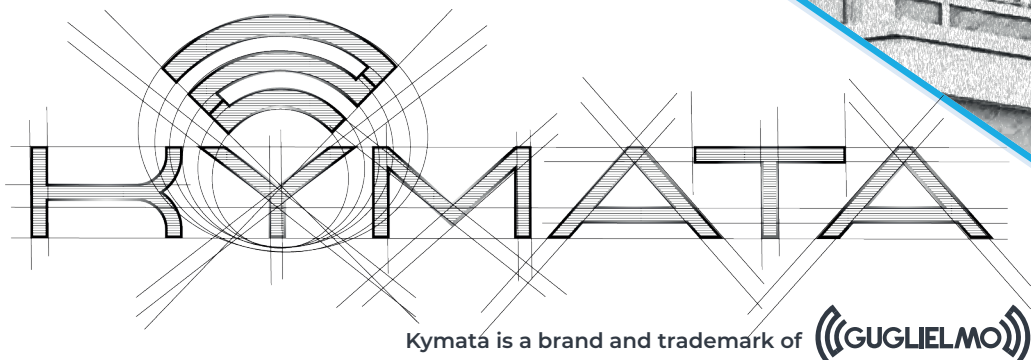
ANTENNA KYMATA Models ANT5AW

Antenna ANT5AW is developed for the Wi-Fi coverage in automated warehouse and vertical storage system



Three-dimensional simulated coverage area





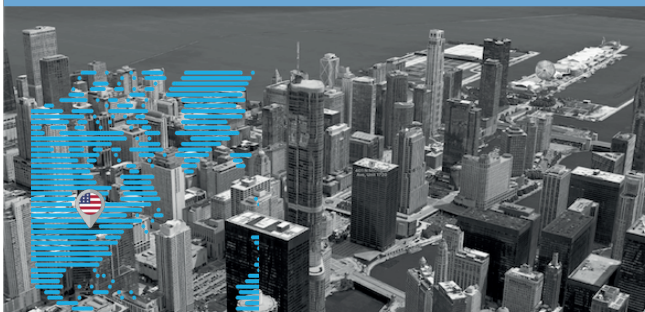
Kymata is an Italian company with its production and operational base situated in Reggio Emilia. We are specialized in IT sector, with a specific focus on Wireless technologies. Our Team includes experienced professionals in **Wireless Transmission Systems**, and we are the leading vendor for amplifiers and distributed antennas system.

Headquarters



Via Don Minzoni, 112 - 42043
Taneto di Gattatico, Reggio
Emilia
ITALY

US Office



401 N Michigan Ave Suite 1720
Chicago, IL 60611
UNITED STATES

Technical Services



Bulevardi Dyrrah 2001
Durrës
ALBANIA