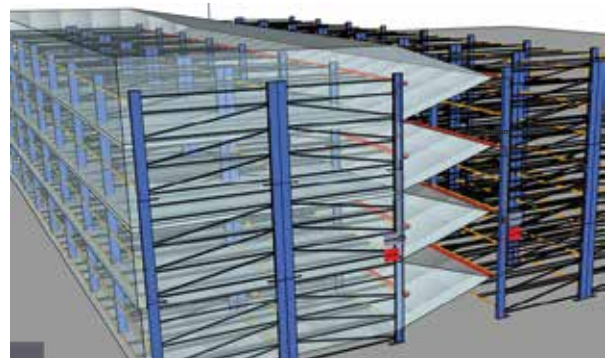
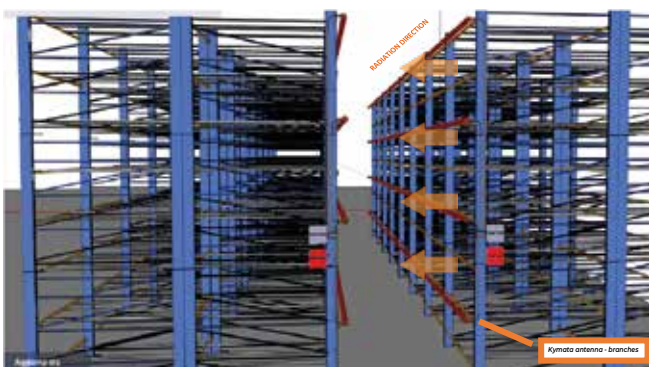


Technical specifications

	L40	L50	L60	L70
Bandwith	1.5GHz-6.2GHz			
Access Point position	Lateral			
Total lenght L	40	50	60	70
Gain @2.4GHz	-30 ± 3dBi	-32 ± 3dBi	-33 ± 3dBi	-34 ± 3dBi
Gain @5.2GHz	-31 ± 3dBi	-33 ± 3dBi	-34 ± 3dBi	-36 ± 3dBi
Aperture -3dB (α) H plan	160°			
Front to back ratio	5dB			
Average Coupling Loss @2.4GHz	73dBi ± 2dBi			
Average Coupling Loss @5.2GHz	74dBi ± 2dBi			
Characteristic impedance	50Ω			
Banding min radius	200mm			
AP connectors type	Nf (a specific jumper JMPX is required to connect the AP)			
Temperature	from -50° C to +85° C			
Diameter	17mm			
Distance to be respected*	100mm			
Certification	IEC 60754-1/-2; IEC 61034; IEC 60332-1; IEC 60332-3-24; CPR: Cca s1 d0 a1, N50575-2017			

*Minimum distance to respect between the antenna and walls/other surfaces during the installation.

Application notes



Accessories

MOUNTING KIT :
 AP JUMER:
 PROTECTION:
 AMPLIFIER:

MKT1HI; MKT60I; MKT1HO; MKT60O; MKT1HX; MKT60X
 JMPRPSMANM/JMPNMNM/JMPRPSMANM
 IPD11CS; IPD11HS
 AMP2; AMP2SM
 AMP5; AMP5D; AMP5SM

MIMO: IPD2X2SM
 DIPLEXER: IPD25D; IPD3BAND