



# ProMobile

Connecting your vehicle and fixed device

- 4G
- 5G
- Wi-Fi
- GNSS
- LTE 450
- UHF

# Your reliable antenna partner

## Why choose Amphenol Procom as your antenna partner?

- 40+ years mobile antenna experience
- Trusted partner and manufacturer of mobile antennas to numerous mission critical networks & public transport markets around the world
- Strong and unrivalled history of co-creating solutions that fits our customers exact needs
- 20+ RF engineers in our R&D team
- Part of the Amphenol family, which access us to extensive RF knowledge and RF products across Amphenol brands

## What does it take to secure reliable communication?

- Wireless communication to vehicles and fixed assets can be challenging for many reasons
- Consistent data throughput despite changing locations
- Weather & vibration wear on equipment
- Need for covering many bands, increase the risk of interference
- Aesthetically pleasing yet still protected against vandalism

## Renowned for high-end quality products

- Stringent test regime -> Environmental, mechanical & RF characteristics measured inhouse in combination with external test houses.
- All internal parts / elements are securely fastened using screws and soldering. No glue is used for assembly of the antenna.
- Material selection of UV stabilised plastics



## Local manufacturing in both Europe and the US

- Extremely high European and US content, local sources, independent from far-east components
- Shorter transportation time and kinder to the environment
- Adaptive to local requirements



# Antennas for Mobile applications

## ProFin & ProFinPlus

Public Safety and Mission Critical networks are migrating to LTE, like FirstNet and ESN, connected vehicles need highly reliable wireless broadband connections that can support ultra-fast access to databases, voice, mapping or streaming video as part of a highly intelligent communication system.

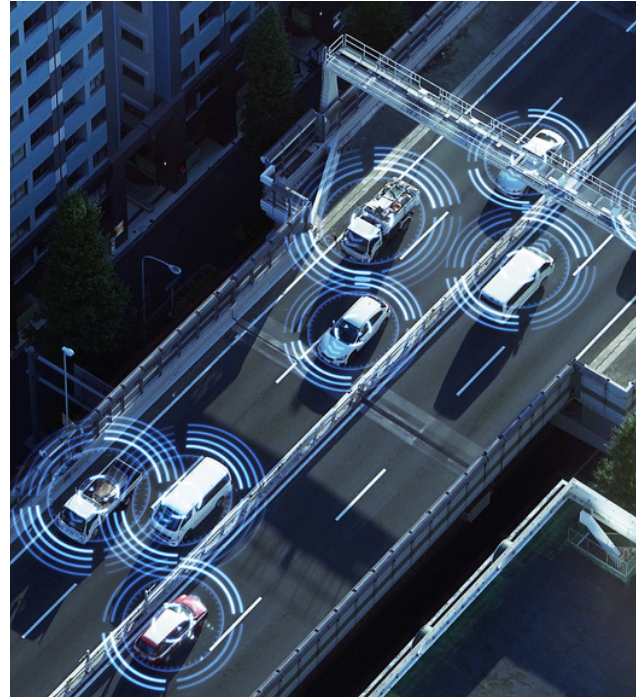


The ProFin is our SISO FIN offering, with some very unique features. Covering 698-2700MHz, with location based services with a single or dual element. Can be configured as 3in1, 4in1 and 5in1 SISO.

Furthermore, Wi-Fi for 2.4/5.8 as standard. Another feature of this product is a UHF element embedded giving the ProFin a discrete covert look on top of the vehicle. An optional VHF or UHF external whip can be fixed too. IP67 is standard.

### Applications:

- 4G/5G
- 2x2 MIMO, LTE and WiFi
- GNSS and GPS elements
- ESN ready
- IP67 protection



The ProFinPlus Antenna is our 2x2 MIMO solution for Mission Critical Radio Networks.

Mission Critical Networks require connected vehicles to be highly reliable wireless connections, which can support ultra-fast access to voice, mapping or streaming video as part of a highly intelligent communication system. Can be configured as 5in1 or 6 in1 MIMO.

### Applications:

Multi- Band – coverage LTE, GPS, GNSS, WiFi and UHF/VHF external whips all supported by 2x2 MIMO. IP67 is standard.



# Antennas for high speed data applications

## ProNexus

Undeniably data, more than voice, is the future in mobile vehicle applications. Vehicle-to-everything (V2X) communications, semi-autonomous, and autonomous vehicles are key drivers and 4G and 5G will play a significant role in that data stream.

However, automobiles will still need to integrate technologies like GNSS & Wi-Fi. Coupled with the need for MIMO to increase the capacity of the radio link and therefore increase data speeds.

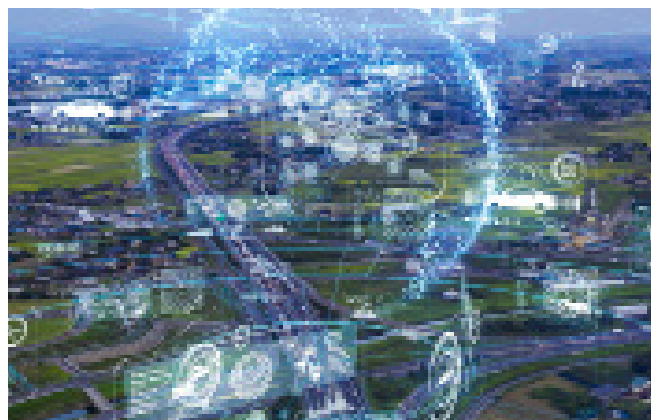
One mobile antenna to serve all your needs The ground independent ProNexus antenna is the solution, combining all technologies in one low profile unit that offers connectivity for LTE, 5G, and Wi-Fi 2.4 and 5.8 GHz, while not forgetting the new standards of Wi-Fi 6/6E.

The legacy of current and future markets would all be served with the state-of-the art ProNexus.

Can be configured as 9in1, 10in1, 11in1 and 12in1 MIMO.

### **Applications:**

- 4x4 MiMo antennas covering 617-960/1710-3800MHz
- 2x GNSS and 4x4 or 6x6 dual Wi-Fi at 2.4/5.0/7.2GHz.
- IP69k offers protection against high powered water spray.
- Sleek industrial design to minimise its appearance on mobile applications like cars, buses, trucks, etc.
- Fixed with a single through hole mount
- Cables are UN ECE R 118 compliant feeds.



# Antennas for mobility and fixed wireless solutions

## ProEdge

Blurring the lines between Mobility and Fixed Wireless Access – ProEdge Antenna. Designed for connectivity for Fixed Wireless Access and Mobility solutions alike!



Our cutting-edge fixed wireless antenna leverages advanced antenna technology resulting in lightning-fast data speeds, thanks to 2x2 MIMO, an advanced antenna system to improve performance for browsing, streaming, and downloading experiences.

Offering wideband coverage for networks, LTE, 5G and Wi-Fi the ProEdge provides expansive coverage for smart city applications, smart transportation & Industrial robotics, telemetry, smart metering, autonomous vehicles, automated parking, backup and remote terminal data connections. Ease of integration is at the forefront of the design.

ProEdge offers a single through hole bolt, delivering a quick and simplistic installation.



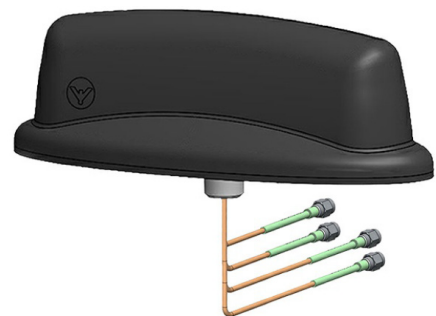
## Features:

- 2x2 MiMo LTE and WI-FI
- 2G/3G/4G/5G
- CBRS and WI-FI 6E 2.4/4.9-7.2 GHz
- Optional GNSS
- IP69 Ingress protection
- IK10 rated enclosure



## Applications ideas:

- Oil and gas rigs
- Agriculture
- Water meter monitoring
- Energy
- Smart Cities
- Other utility application



# Antennas for fixed wireless applications

## ProConnect & ProConnectPlus

The **ProConnect** and **ProConnectPlus** are compact antennas with low visual impact and high performance. Available as MiMo or SISO these ground plane independent antennas cover 4G, 5G, CBRS, WiFi 2.4 / 5 and Wi-Fi6. Options include either 1 or 2 X GNSS element(s).

The environmental specification is high end too. IP69K ingress protection, IK10 impact resistance and ECE 118 fire rated cables.

Can be configured as 2-in-1 and 3in1 SISO or 3in1 and 4in1 MIMO.

### Applications ideas:

- Smart City – EV charge points, Vending machines, Payment Machines, and hotspots.
- Smart Industry – Cargo loading and handling. Mobile vehicles and IIoT
- Smart Transportation – Public Safety, Fleet Management, and Intelligent transports Solutions





	ProFin	ProFinPlus	ProNexus	ProConnect	ProConnectPlus	ProEdge
<b>4G/5G</b>	✓	✓	✓	✓	✓	✓
<b>UHF/VHF</b>	UHF Built-in. UHF & VHF whip option	UHF & VHF whip option	-	-	-	-
<b>SISO</b>	✓ 3in1 4in1 5in1	-	-	✓	-	-
<b>MIMO</b>	-	2x2 3in1 4in1 5in1	4x4 / 6x6 9in1 10in1 11in1 12in1	-	2x2	2x2 3in1 4in1
<b>GNSS</b>	1	1	Optional 1 or 2 elements	Optional 1 or 2 elements	Optional 1 or 2 elements	1
<b>WiFi</b>	2.4 / 5.8	2.4 / 5.8	Up to 6x6 WiFi 6e	WiFi 6E	Up to 2x2 WiFi 6e	Up to 2x2 WiFi 6e
<b>IK10 rated</b>	✓	✓	✓	✓	✓	✓
<b>IP</b>	IP67	IP67	IP69K	IP69K	IP69K	IP69K
<b>Applications</b>	Mobile	Mobile	Fixed Wireless / Mobile	Fixed Wireless / Mobile	Fixed Wireless / Mobile	Fixed Wireless / Mobile

# About Amphenol Procom

At Amphenol Procom, we are committed to providing solutions that can be trusted no matter how extreme the environment, or how complex the complete networks solution might be. We exist to create innovative and reliable solutions together with our customers.

We are proud of what we do, how we do it, and the values we bring

Your network relies on the quality of its components; if one goes down, it can take the rest with it. That's why our products are built for quality and tested to the extreme - so that performance is not compromised under any circumstances. With manufacturing in Denmark, UK, and the US, Amphenol Procom serve a wide range of market segments such as Public Safety, Private LTE/5G Networks, Utilities, and Transportation.

We have more than 7.000 products in our portfolio, mainly covering base station antennas, portable & mobile antennas, combiners, filters and DAS solutions.

Amphenol Procom is a division of the Amphenol Corporation, a \$10 billion-dollar organization that is one of the largest manufacturers of interconnect products in the world. The company designs, manufactures and markets electrical, electronic and fiber optic connectors, coaxial and flat-ribbon cable, and interconnect systems.



## HEAD OFFICE AND PRODUCTION

### DENMARK

Amphenol Procom DK  
Smedetoften 12  
DK - 3600 Frederikssund

Phone: +45 48 27 84 84  
E-mail: [dksales@amphenolprocom.com](mailto:dksales@amphenolprocom.com)  
[www.amphenolprocom.com](http://www.amphenolprocom.com)

### UK

Amphenol Procom UK  
Rutherford Drive  
Park Farm South,  
Wellingborough, Northamptonshire  
NN8 6AX United Kingdom

Phone: (+44) 1933-408408  
E-mail: [uksales@amphenolprocom.com](mailto:uksales@amphenolprocom.com)  
[www.amphenolprocom.com](http://www.amphenolprocom.com)

## SUBSIDIARIES

### USA

Amphenol Procom Inc.  
1123 Industrial Drive  
Conover, North Carolina  
28613 USA

Phone: (+1) (704) 682-8485  
E-mail: [ussales@amphenolprocom.com](mailto:ussales@amphenolprocom.com)  
[www.amphenolprocom.com](http://www.amphenolprocom.com)

### GERMANY

Procom Deutschland GmbH  
Feldstraße 1  
DE - 24983 Handewitt

Phone: +49 (0) 461 957722  
E-mail: [info@amphenolprocom.de](mailto:info@amphenolprocom.de)  
[www.amphenolprocom.de](http://www.amphenolprocom.de)

### FRANCE

C/O Jaybeam Wireless  
ZI de la Boitardière  
Chemin du Roy  
37400 Amboise

Phone:  
+33 (0) 149803200  
E-mail:  
[fr.info@amphenolprocom.com](mailto:fr.info@amphenolprocom.com)

